

## Orthographic Sketching—Architecture

One of the careers that can be done using Graphic Communication is an architect. Architects design houses and other buildings. In planning out ideas, they will sketch a lot of different possibilities before committing this to a computer aided drawing. Architectural drawings use **Orthographic Views**, just like we do in other technical drawings.

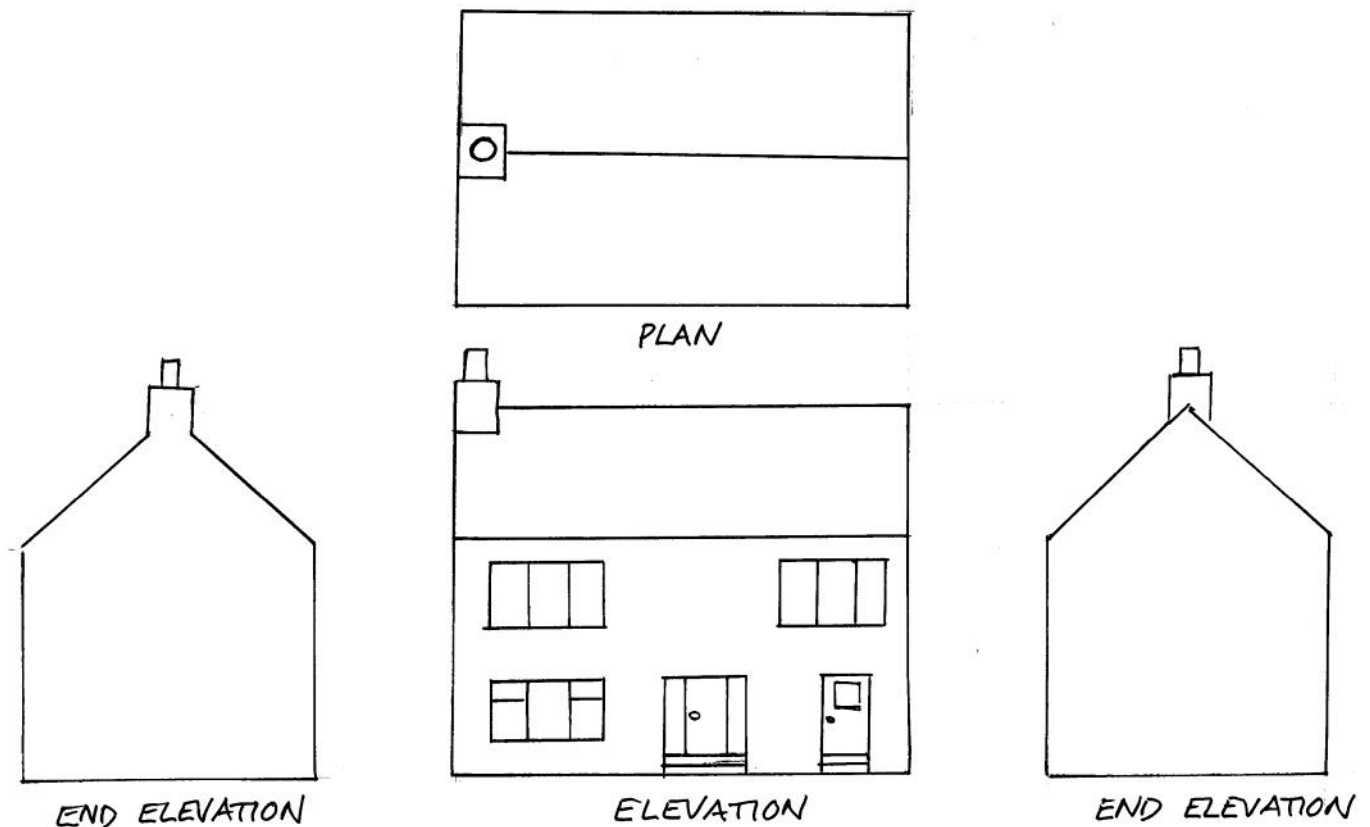
These will usually have the following views:

**Elevation**—a view looking **straight on** to the front of the building.

**Plan**—a view from the sky—sometimes called a 'bird's eye view'.

**End Elevation**—A view of the end of the building—often two of these are needed—one to the left and one to the right.

**Rear Elevation**—these will be needed in architectural situations, but we don't tend to use them in Graphic Communication.



The example above shows four **Orthographic** views of a typical house. Things to note are:

- The three **Elevations** are all sitting at the same level—imagine them sitting on the same bit of ground.
- The **Plan** is always directly above the **Elevation**.
- The size of the views stays constant—eg the length of the plan **must** be the same length as the Elevation.
- The **Width** of the left hand End Elevation **must** be the same width as the right hand End Elevation.
- This **width** is also the same as the size from top to bottom of the Plan.