

Desk Top Publishing

A graphic designer created a layout containing various infographics, shown to the right.

1. State the types of graph/chart shown at:

(a) graph/chart A _____ [1]

(b) graph chart B _____ [1]

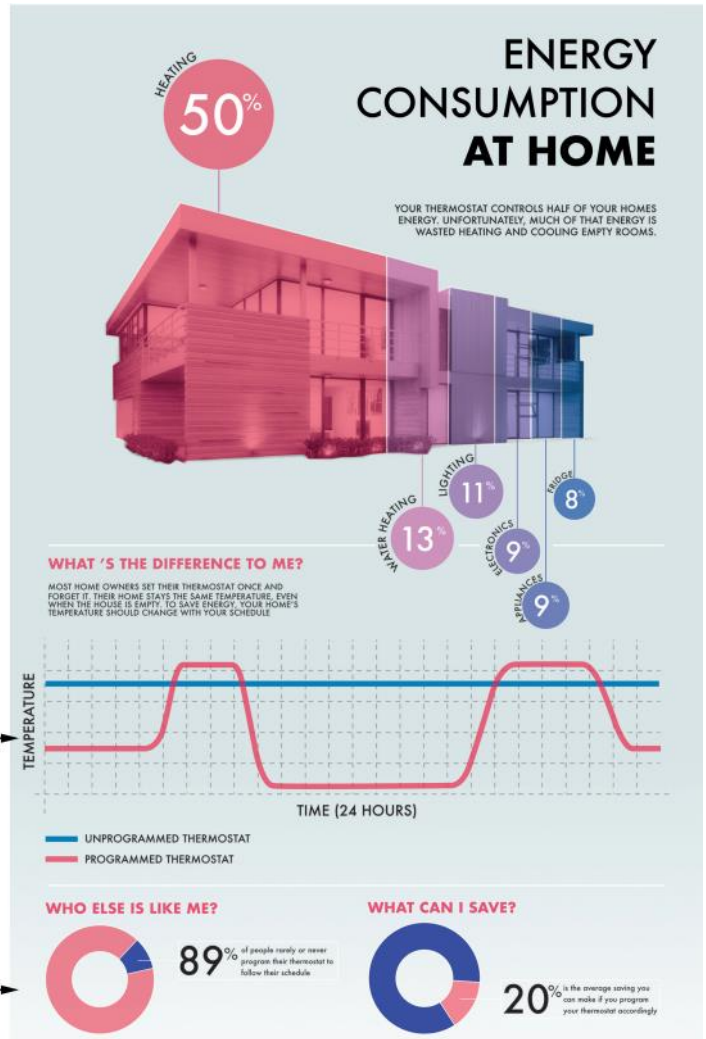
2. Explain, giving reasons for your answer, why graph/chart A is appropriate for communicating this type of information?

_____ [2]

3. The graphic designer created a graph based on a photograph of a house to show the proportions of energy consumption in a home. Describe **two** ways the designer has used proportion to convey the different percentages of consumption.

graph/chart A

graph/chart B



_____ [2]

4. The graphic designer used DTP software to edit the image of the house by removing the background. State the name of the DTP tool used to remove the background from an image.

_____ [1]

5. Explain the advantages of removing the background from the image of the house.

_____ [1]

6. A detail from the image above is shown. Name the DTP feature shown at:

(i) _____ [1]

(ii) _____ [1]

(continued over)





Irvine Royal Academy—Technical Department

S3/S4 Graphic Communication Homework

Desk Top Publishing

7. Explain two ways the graphic designer can reduce the impact on the environment when printing the layout.

[2]